

Bench Digital Multimeter

- ✓ Display max 55,000 counts, DC voltage accuracy up to 0.025%
- ✓ High-resolution LCD display
- ✓ Data record function, math function
- ✓ Dual line display supported



**Auto
Range**

**True
RMS**

Hz
Frequency
Measurement

**Data
Hold**


**4-Wire
Resistance**

TEMP
Temperature
Measurement



Main features

- Display max 55,000 counts, DC voltage accuracy up to 0.025%
- Multiple measurement functions:
DC Voltage, AC Voltage, DC Current, AC Current, 2-wire resistance, 4-wire resistance, capacitance measurement, continuity test, diode test, temperature measurement, AC and frequency (AC + Hz) measurement, MAX/MIN/average measurement, relative measurement (REL_%)
- Reading rates up to 65 readings per second
- AC true RMS measurement, measurement bandwidth: 20 Hz – 1 kHz
- Data record function, you can record the measured data into internal memory, and then read and process the recorded data with your computer
- SCPI supported, remote control the multimeter through PC software via the RS232 port.
- Using our powerful and easy to use interface, you can access, store, process and manage your data, by simply displaying your results in form of a table.
- 3.7 inch high-resolution LCD, providing a clear display

Large LCD display

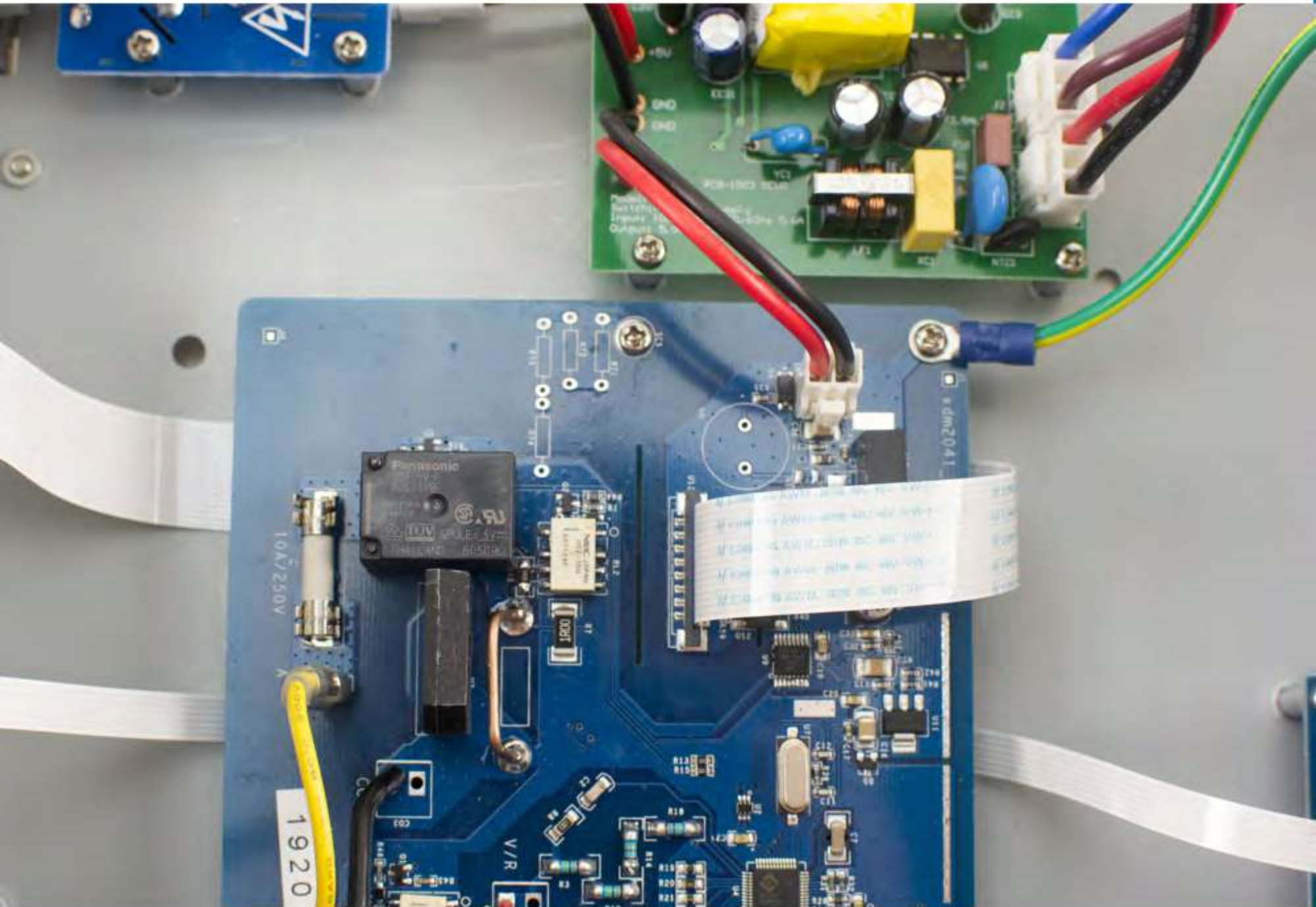
Clear and concise readings



- High-resolution LCD Display (480 × 320 pixels)

Concise circuitry/Low failure rate/High reliability

Large creepage and clearances provide a high safety rating

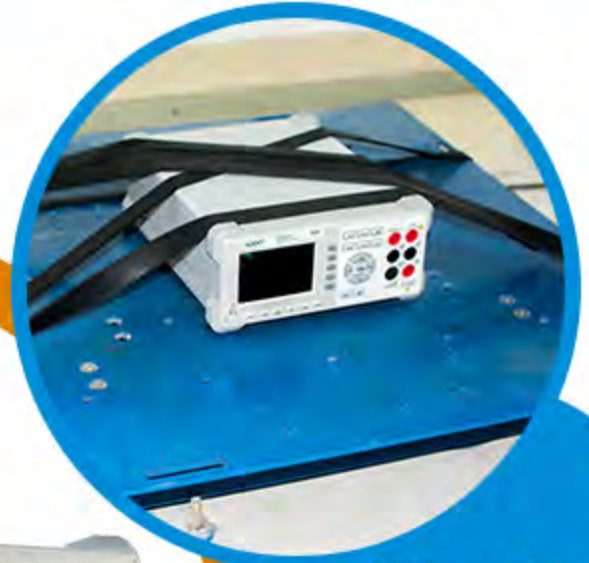


Our high standards of professional design and production ensure quality and stability of each multimeter.

High-low temperature test



Vibration test



Salt spray test



Calibration equipment



Function Details

●Trigger			Auto
NO	MODE	VALUE	Point
1	DCV	-00.362mVDC	1000
2	DCV	-00.362mVDC	Interval
3	DCV	-00.362mVDC	0000.015
4	DCV	-00.362mVDC	Back
5	DCV	-00.362mVDC	
6	DCV	-00.362mVDC	
7	DCV	-00.362mVDC	
8	DCV	-00.362mVDC	
9	DCV	-00.362mVDC	
Range		Function	Back
Auto 50 mV		DCV	

Data Record Function

Supports a maximum of 1000 points recording to internal memory. The recording interval can be set from 15 mS to 9999 S.

Math The multimeter can do calculations (max, min, average, dBm) for you, saving time and effort

●Trigger			Max/Min						
-00.3533 mVDC			Static						
			ON						
<table border="1"> <thead> <tr> <th>MAX</th> <th>MIN</th> <th>Average</th> </tr> </thead> <tbody> <tr> <td>-00.340mV</td> <td>-00.357mV</td> <td>-00.352mV</td> </tr> </tbody> </table>			MAX	MIN	Average	-00.340mV	-00.357mV	-00.352mV	Clear
			MAX	MIN	Average				
-00.340mV	-00.357mV	-00.352mV							
			Back						
Range		Function							
Auto 50 mV		DCV							

●Trigger			dB/dBm		
003.99 dBm			Model		
			ON		
<table border="1"> <thead> <tr> <th>Function</th> </tr> </thead> <tbody> <tr> <td>dBm</td> </tr> </tbody> </table>			Function	dBm	Rel R
			Function		
dBm					
			50Ω		
			Back		
Range		Function			
Auto 50 mV		DCV			

Dual line display supported

Supports dual line displays of AC voltage, current and frequency.

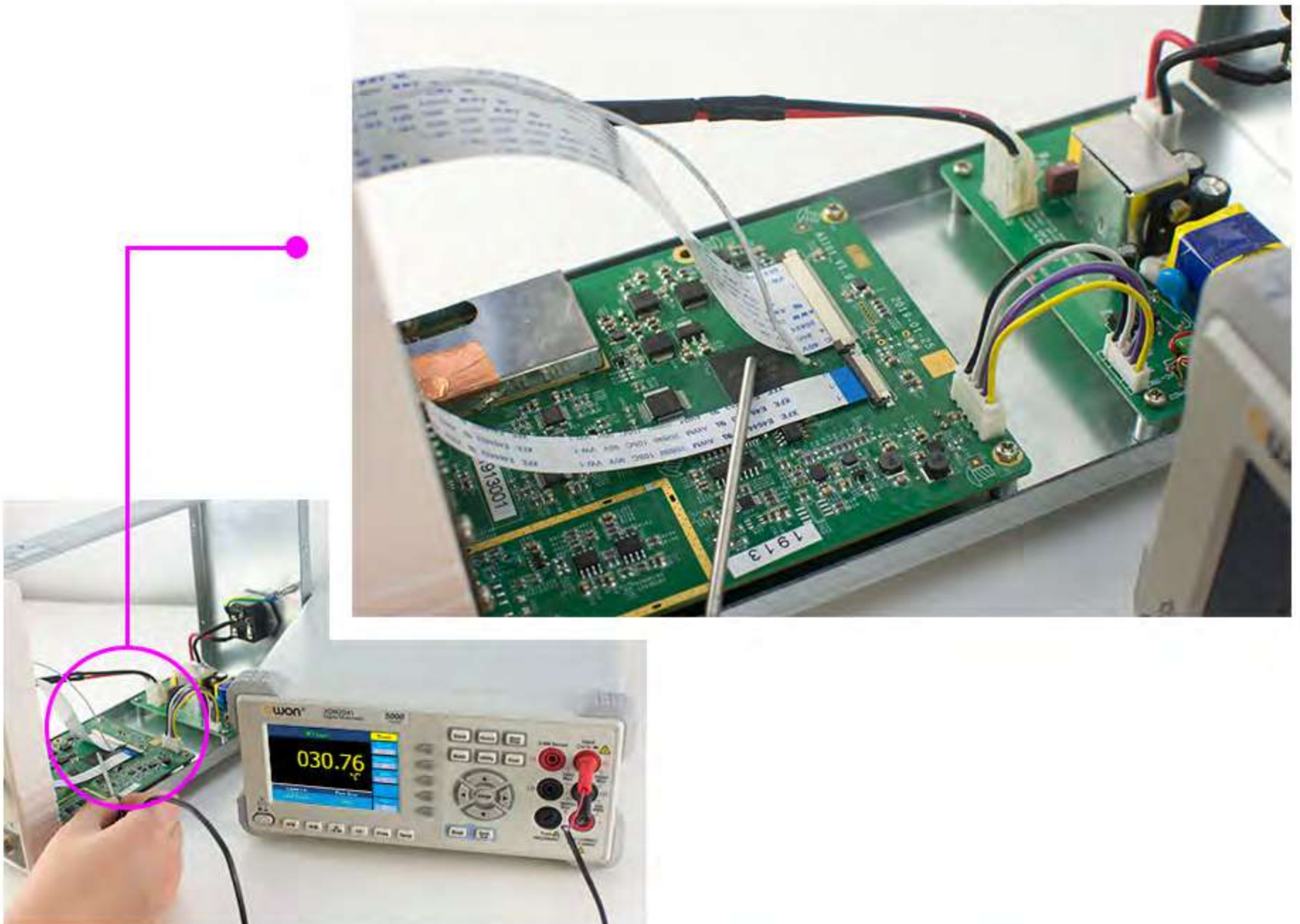
●Trigger			ACV						
Dual Switch			Range						
Exit Exit			Auto						
000.00 mVAC			Speed						
			Low						
<table border="1"> <thead> <tr> <th>0.0000 Hz</th> <th>Auto 500 mV</th> <th>Freq</th> </tr> </thead> <tbody> <tr> <td></td> <td></td> <td></td> </tr> </tbody> </table>			0.0000 Hz	Auto 500 mV	Freq				
0.0000 Hz	Auto 500 mV	Freq							
Range		Function	Rel						
Auto 50 mV		ACV	Off						

4-wire resistance measurement

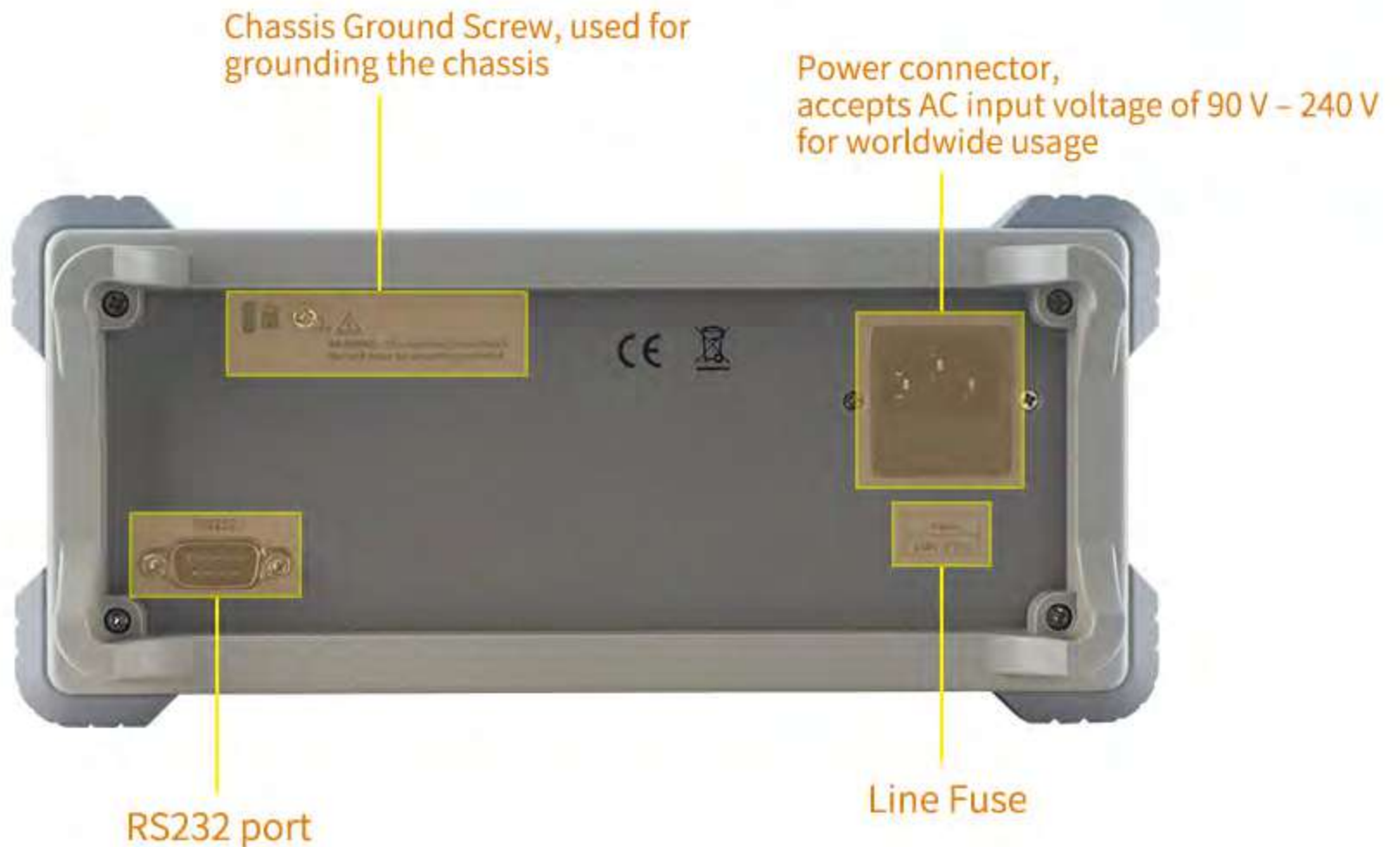
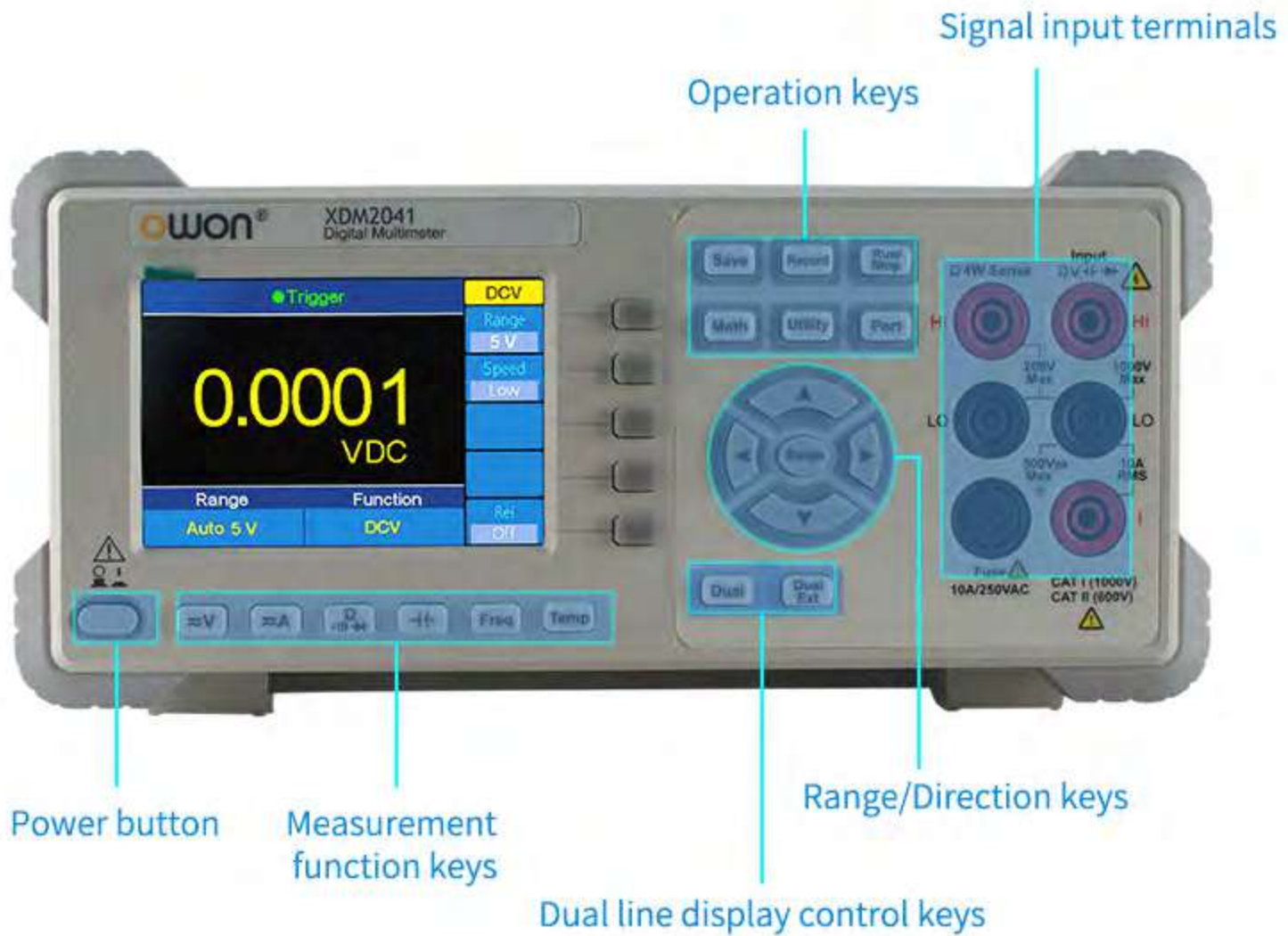


Temperature measurement

Built-in thermocouple compensation







	Measurement Range	Resolution	Accuracy \pm (% of reading + % of range)
DC Voltage	50.000mV	0.001mV	0.1%+10
	500.00mV	0.01mV	0.025%+5
	5.0000V	0.0001V	0.025%+5
	50.000V	0.001V	0.03%+5
	500.00V	0.01V	0.1%+5
	1000.0V	0.1V	0.1%+5
AC Voltage	500mv-750v	20Hz~45Hz	2 + 0.10
		45Hz~65Hz	0.2 + 0.06
		65Hz~1KHz	1.0 + 0.06
DC Current	500uA	0.01uA	0.15%+20
	5000uA	0.1uA	0.15%+10
	50mA	0.001mA	0.15%+20
	500mA	0.01mA	0.15%+10
	5A	0.0001A	0.5%+10
	10A	0.001A	0.5%+10
AC Current	500uA-500mA	/	0.5%+20
	5A-10A		1.5%+20
Resistance	500 Ω	0.01 Ω	0.1%+10
	5K Ω	0.0001K Ω	0.1%+5
	50K Ω	0.001K Ω	0.1%+5
	500K Ω	0.01K Ω	0.1%+5
	5M Ω	0.0001M Ω	0.25%+5
Four-wire resistance	500 Ω	0.01 Ω	0.1%+10
	5K Ω	0.0001K Ω	0.1%+5
	50K Ω	0.001K Ω	0.1%+5
	Measurement Range	Resolution	Accuracy \pm (% of reading + % of range)
Frequency	10.000Hz - 60MHz	/	\pm (0.2%+8)
Capacitance	50nF-500uF	/	2.5%+5
	5mF-50mF		5%+8
Diode	3.0000 V	0.0001V	/
Continuity	1000 Ω	0.1 Ω	/
Temperature	K type , PT100		
Display	55,000		
Data-logging Function			
Logging Duration	15ms-9999s		
Logging Length	1,000 points		

Accessories and Packaging



Power Cord



Multimeter Lead



Alligator Clip



Fuse

